



# FUTURE LEADERS PROGRAMME

Accelerate Your Leadership Trajectory.



# PROGRAMME OVERVIEW

The Future Leaders Programme (FLP) is a 9-month programme designed to build a firm foundation for front line managers who demonstrate high-potential for future leadership roles.

Build a deeper understanding of operations, marketing, innovation and change to develop a cross-functional business approach. Develop a 360-degree perspective of how various functions align to the broader strategy of your organisation. Understand what makes you 'YOU' and explore your personal leadership style. Empower your team by delegating, role modelling and engaging effectively. And bring these newly gained insights into your daily work life to drive higher performance both now and in the future.

As you build your track record of success as a manager across a variety of situations and challenges, you prepare the way for future success as a leader.

# A MANAGEMENT PROGRAMME THAT PUTS YOU AT THE FOREFRONT

## A Catalyst for your Career Transformation

The Centre for Executive Education (CEE) at ISB is a vibrant hub for interaction between business leaders and academia. CEE attracts world-class faculty from India and around the globe and its programmes are powered by their cutting-edge research and expertise on management emerging economies. Participants learn through active engagement with complex business challenges and draw insights from the rich experience and perspectives of a diverse group of peers.



**#5**  
Asia Ranking



**#1**  
India Ranking



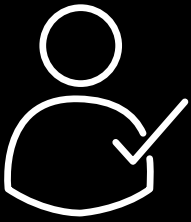
**600+**  
Programmes delivered

The FLP accelerates careers of high-potential young managers by preparing them to:

- Understand the challenges of modern business management
- Master a cross-functional approach to collaboration and delivering business outcomes
- Identify opportunities for growth and innovation unleashed by the digital revolution and a globalising economy
- Craft their personal leadership development plan to lead teams with greater authenticity, empathy, and purpose

Successful organisations invest in grooming high-potential talent to prepare them for future success and growth. The FLP helps organisations gain a competitive edge by building a vibrant pipeline of leadership talent ready to take the organisation to greater heights.





IS THIS  
PROGRAMME  
FOR YOU?

This programme is designed for high-potential talent seeking to play an expanded role in managing teams within their function. Typical profiles include:

- Individuals who transitioned into a people manager role within the last couple of years
- Young business leaders/owners or next-gen directors of family-managed businesses

Extraordinary individual contributors with 5-10 years of work experience who are well on their way towards a management role may also be considered on a case-by-case basis.

# PROGRAMME FEATURES

---



LEAD: Personalised  
Leadership Development  
Plan



Action  
Learning Project



Rich Learning  
Experiences



Industry  
Interactions



ISB Executive  
Alumni Status



ISB Certificate

“

FLP is designed to elevate high-potential executives to take on greater leadership responsibilities and accelerate their career. This programme will serve as the foundation to hone some of the most critical skills to become a successful leader.

### **Professor Deepa Mani**

*Area Leader and Professor of Information Systems and Deputy Dean – Digital Initiatives & Centre for Executive Education, ISB*

“

If data is the new oil, statistics is the new refinery. It is impossible to use crude oil unless it is transformed into end products like petrol and diesel. Statistical methods allow managers to extract insights from their business data and make smart decisions.”

### **Sarang Deo**

*Professor and Area Leader, Operations Management Executive Director-Max Institute of Healthcare Management (MIHM), ISB*

“

Master the art of concise, precise, and compelling communication leading to great leadership & personal impact in today's age of short attention spans.

### **Mihir Mankad**

*Professor of Practice, Leadership Communication, Tufts University; Visiting Faculty at ISB*

# GET A HEAD START ON YOUR LEADERSHIP JOURNEY

## **Integrated Modular Approach**

Designed to spark self-reflection, innovation and collaboration, the FLP is carefully structured with five integrated modules that will be delivered in a blended format – on-campus immersions, Live Virtual sessions and online asynchronous self-paced courses. The programme spans across 9 months requiring you to commit 7-8 hours per week and a week away from your workplace. It will provide you the flexibility to adapt an agile approach to apply your new learnings at your workplace.

## **LEAD – Leadership Engagement and Development**

Understand your strengths and gaps and build the foundation to launch your career in management. Effectively manage yourself and others by developing an agile approach to leadership. Understand team dynamics, interpersonal behaviour related to organisational performance.

## **Action Learning Project**

The Action Learning Project (ALP) will provide you an opportunity to engage yourself in a real-world business challenge. Apply your new learnings and skills in-between modules and personalise your project plan. Establish a connect with your FLP peers who can guide you with their unique expertise to steer you on the right path.

“

“Master Finance in depth.  
Learn to be Fintelligent.”

**Ramana Sonti**

*Associate Professor (Practice)  
Finance, ISB*

“

“As we navigate the world of digital business models, the culture to rapidly hypothesize, experiment, validate and iterate will define success more than anything else”

**Vishal Karungulam**

*Product Leader, Microsoft  
Visiting Faculty at ISB*

## Industry Interactions

Expand your professional network through interactions with peers holding rich experience across a variety of different industries and functions. Complement this diverse outlook with unique perspectives and deep insights shared by top industry leaders.

## Rich Learning Experiences

Engage in live sessions with faculty, insights with industry practitioners, group discussions, hands-on application, and case-studies. A highly immersive environment to facilitate the exchange of business ideas and overcome personal leadership challenges.

## ISB Executive Alumni Status

After successful completion of all the five modules, you will be awarded with the ISB Executive Alumni status. Gain access to exclusive privileges of the ISB Executive community like ISB e-mail ID, ISB ID-Card, access to the Executive Alumni Portal and LinkedIn Group, and discounts on other open programmes in our portfolio. In addition, you will receive ongoing access to a variety of ISB research, information, and resources.

## ISB Certificate

Gain an official certificate awarded by the Centre for Executive Education at ISB, a formal recognition of your professional development.



# LEARNING EXPERIENCE

Executive education reimagined for a new reality. This programme blends the best of the world-class on-campus experience with advanced online learning, taught by the best minds in executive education. You will gain skills to advance your leadership goals and map your career for future success.



## Live Virtual Classrooms

Experience a new way of immersive learning allowing you to engage live with faculty and peers from anywhere in the world.



## World-Class Faculty

Learn from world-class faculty teaching at top global business schools.



## Online Learning

Learn at your own pace ensuring a flexible and focussed online learning experience.



## On-Campus Learning

Learn and network with a class of peers in a residential phase that culminates into the conclusion of the programme.



## Research-Based Teaching

Learn at India's most research productive business school. Gain from the advanced, up-to-date research conducted by world-renowned faculty at ISB.



## Real-world application

Apply your new learnings and real-world skills in-between modules and emerge as a confident leader.



# THE ISB CAMPUS EXPERIENCE

ISB is committed to creating world-class leaders through its innovative programmes, outstanding faculty and thought leadership.

With a strong focus on research, it is one of the few business schools to focus on emerging economies. It allows to gain an insight into the Indian business environment and get the opportunity to develop a wealth of network through interactions with industry leaders, current students and ISB alumni.

With a state-of-the-art campus located in tranquil settings, it provides an environment that is conducive to learning.



## RICH LEARNING COMMUNITY

During your programme, you will be living with a diverse group of peers that spans across regions, industries and functions. An environment that encourages you to expand your professional network and enrich your career.



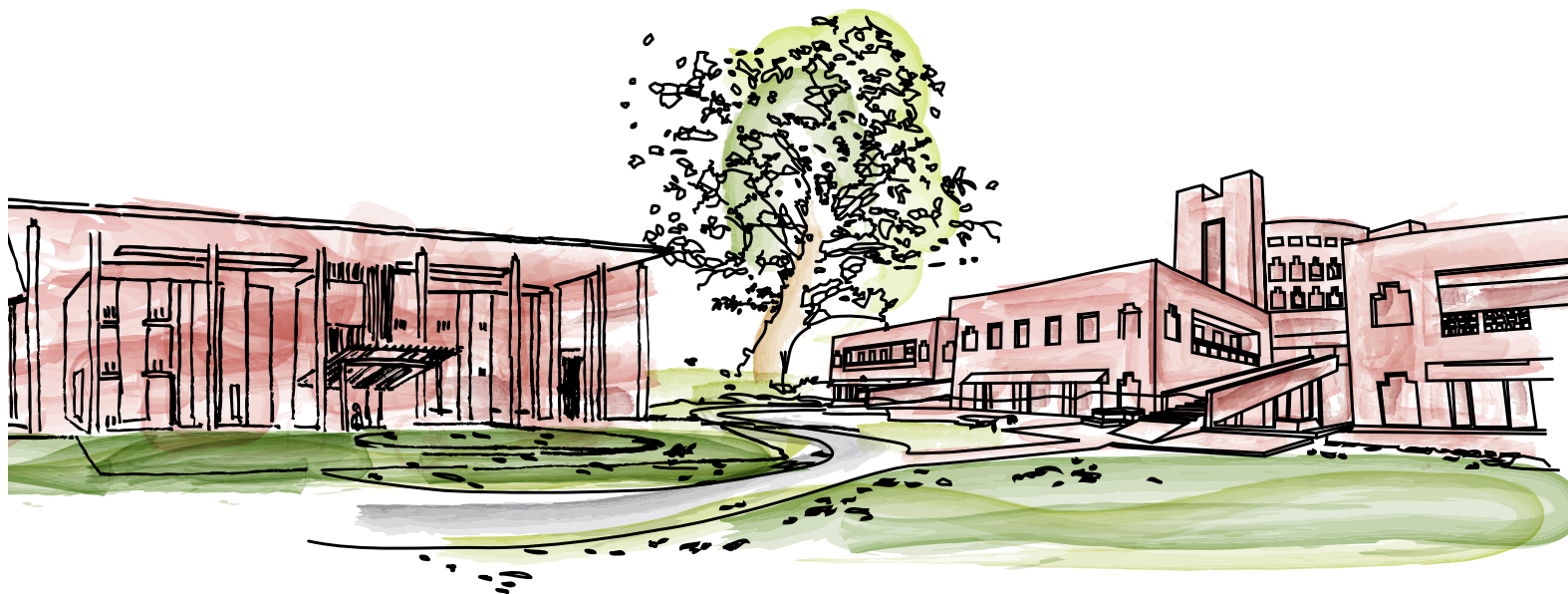
## COMFORTABLE ACCOMODATION

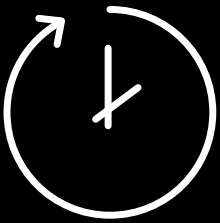
Well-equipped living areas with access to recreation centre, dining facilities and a range of amenities within the campus. The campus is a self-contained oasis in which the students find that all their needs are met and surpassed.



## CENTRALLY LOCATED CAMPUS

ISB is minutes away from the campuses of some of the largest global companies. It is located close to a range of activity centres for sports, arts, dining and shopping.





## PROGRAMME DETAILS

Plan to devote 7-8 hours per week for 9 months, including two Live Virtual sessions of 3 hours each:

### **Weekend hours:**

Saturdays - 6.00 pm to 9.00 pm (IST) or

Sundays - 10.00 am to 1.00 pm (IST)

### **Weekday hours (once a week):**

6.00 pm to 9.00 pm (IST)

In addition to this, prepare yourself to attend two campus immersions for 3 days and 4 days at the start and end of the programme schedule.

Campus immersions will include sessions on Personal Leadership, final review of the Action Learning Project (ALP), industry interactions, lunch with a CEO, dinner with the Dean and even a graduation ceremony.

# PROGRAMME JOURNEY

## Module 1: Personal Leadership



On-Campus

Live Virtual sessions

Learn invaluable lessons on how to form a personal leadership strategy. Develop an understanding of how to develop and be committed to enhance your executive presence.

- Identify your strengths and gaps and receive 360° feedback from faculty and peers.
- Understand what makes you, 'YOU' and explore your personal leadership style.
- Refine your executive presence by experimenting within your peer group under the guidance of expert faculty.

## Module 2: Business Foundations



Online, Self-paced learning

Assess and build collective business knowledge as a first step to start your transformative leadership journey. Complete introductory courses in accounting, statistics, managerial economics, and critical thinking leading up to the Live Virtual sessions.

- Build a strong foundation with some of the critical concepts required to lead effectively.
- Your peers will come with various experiences and diverse backgrounds. Complete these introductory courses to start off at a level playing field.



### Module 3: Analyse and Pursue Opportunities in Business



Live Virtual sessions



Online, Self-paced learning

Analyse the business environment by developing an understanding of the economic, political and social factors that influence business decisions.

- Develop an understanding of how to pursue opportunities and explore areas of strategy, market research, and finance.
- Gain a broader understanding of how various functions within a business align with the overall organisational strategy.
- Apply your new learnings and insights from these modules to your work routine and embark on your leadership journey from the get go.

### Module 4: Drive Business Results



Live Virtual sessions



Online, Self-paced learning

Gain a deeper understanding of operations, marketing, innovation and change to develop a cross-functional business approach.

- Strengthen your leadership skills and prepare to apply the learnings from these modules in a way that supports your organisation's needs.
- Start to bring in these newly gained insights in-between modules into your daily work tasks to drive results.

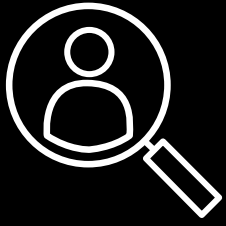
### Module 5: Lead Self, Others, and the Organisation



On-Campus

Develop the skills you need to become an effective manager, drive innovation and change by applying the foundational skills and learnings from the previous modules.

- Learn to understand the needs of the people you are or will be leading
- Empower your team by engaging effectively
- Engage and interact with business leaders who share powerful life-lessons



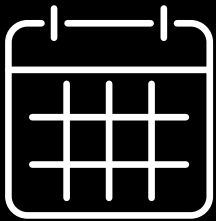
# SELECTION CRITERIA

The Programme Office evaluates each applicant's profile based on a variety of criteria to ensure that selected participants are well-rounded individuals who bring something unique to the class. Each component of the application and the interview is important. Selection will be made based on multiple factors, including but not limited to:

- People management track record and/or potential, traits, attitude/mindset
- Quality and quantity of work experience
- Evidence of professional success
- Ability to benefit more from the programme
- Motivation to participate in the programme
- Ability to cope with the rigour of the programme
- Overall prior academic performance
- Interview Performance

**We admit candidates on a rolling, space-available basis, and encourage you to apply as early as possible.**





## Dates and Programme Fees

### Programme Dates

January 16, 2022

Round 1 Application Closing Date:

December 08, 2021

Round 2 Application Closing Date:

January 04, 2022

### Duration

9 months

### Fee

INR 500,000 (USD 6900) plus taxes

[Click here to Register](#)

For any queries you can write to [linda.taylor@questmasterclass.com](mailto:linda.taylor@questmasterclass.com)

\*The On-campus sessions are subject to evolving global situation. Programme content, dates, schedule, fees, delivery platforms, and faculty are subject to change. Programme fee includes food and accommodation at the ISB campus or at an equivalent facility based on availability.